



TC210 CLUBMAXX EXHAUST PIPE INSULATION

Depending on the brand of chassis the header pipe of the exhaust will vary in distance from the seat. We recommend regardless of distance to apply heat insulation to the header pipe in the following manner.

This will do two things.

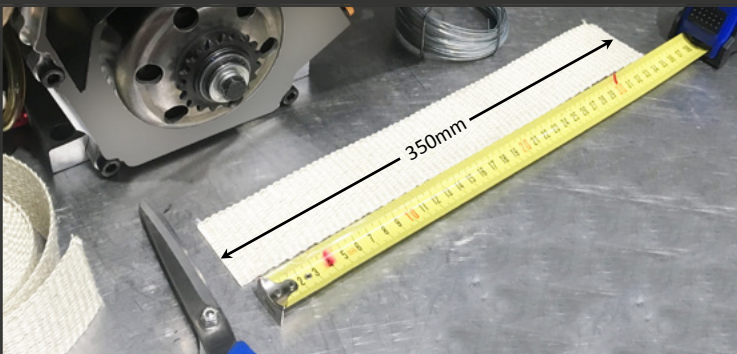
- Stop heat transfer from the exhaust through your seat adding to driver comfort.
- Stop the potential to accidentally burn a hole in your driving suit.



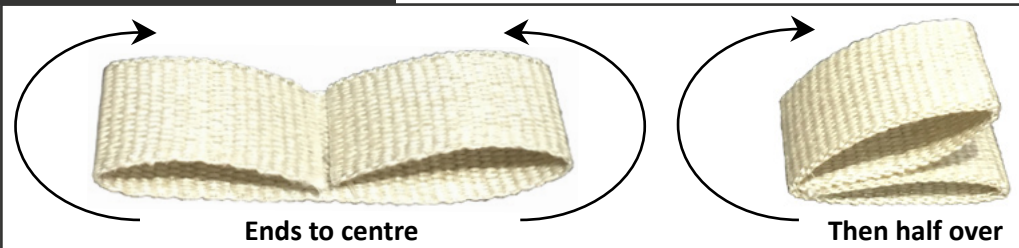
Applying this kind of insulation to 4 stroke kart engines is common place.

HOW TO GUIDE:

1) Cut a 350mm strip of heat insulation



2) Fold material into 4 layers



3) Use tie wire to secure the insulation to the top of exhaust pipe



CAUTION

DO NOT WRAP AROUND THE PIPE

- The bottom of the pipe must be left open for air cooling.
- Wrapping the whole pipe will cause it to overheat and fail.